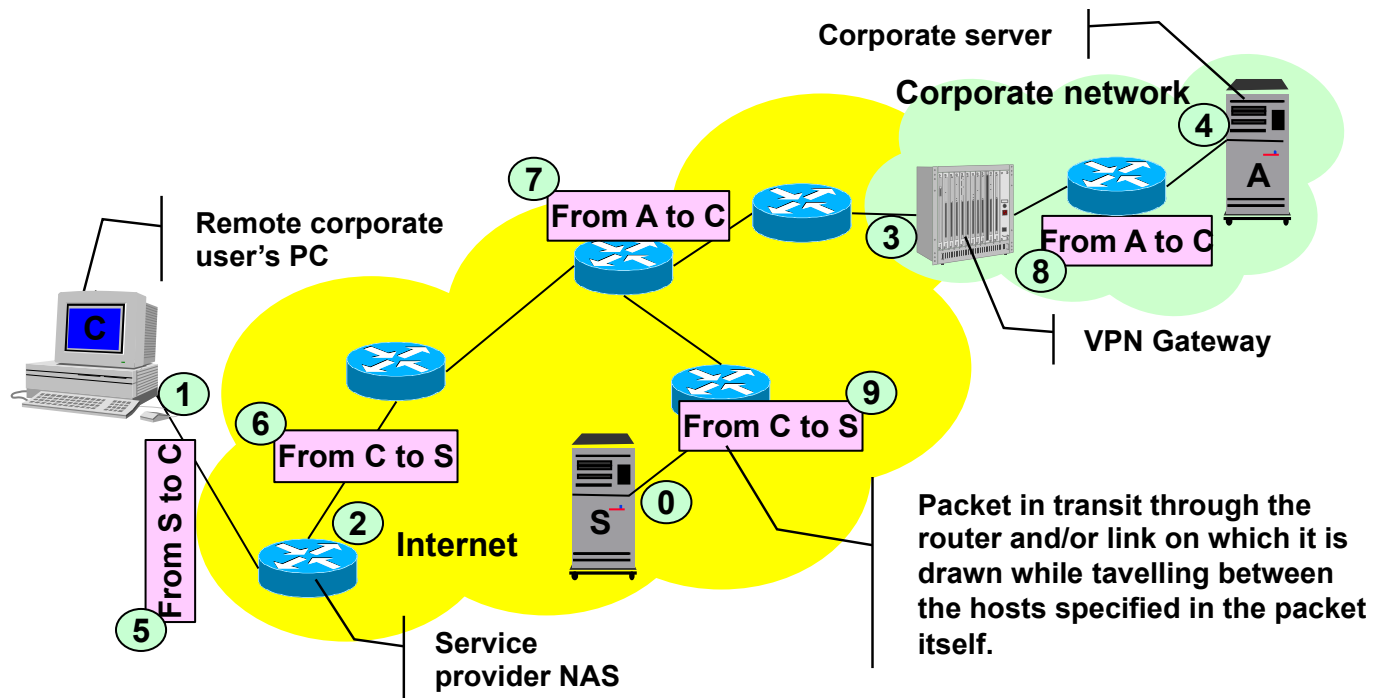


Question 4) Given the provider provisioned access VPN scenario depicted in the following figure, indicate (directly in the table below) the IP addresses assigned to the interfaces and included in the packets marked with a number. Interface addresses can be chosen freely as long as they are compatible with the operating principles of IP and the common deployment practices of this specific access VPN solution. As far as packets are concerned, please explicitly provide both source and destination IP addresses and, in case multiple IP headers be deployed (tunneling), explicitly list the IP address pair (source and destination) within each of the headers, clearly specifying the header (i.e., internal or external) they belong to. As far as interfaces are concerned, please list all IP addresses assigned to them if the specific VPN deployment scenario requires them to have more than one address. (11 points)



0)	1)
2)	3)
4)	
5)	
6)	
7)	
8)	
9)	

